

# Installation Guide (Quick Guide)

The Fores intercom series is the successor to the Brave intercoms. It retains all its essential features and simplifies microphone sensitivity and volume settings.

## Quick configuration

Setting parameters is possible either using the ForesSet program version 4.1 (and higher) or over the phone using DTMF codes entered from a regular phone.

Entering the programming mode is possible after entering the password. The programming mode is only accessible during an incoming call and is indicated by a specific beep. The programming mode can be terminated either by hanging up or by an exit command. If the password is not known, please turn the DIP1 switch to the ON position before calling, and after picking up, the device will be in programming mode. After programming, switch DIP1 to OFF to enable normal operation.

The end of fixed-length statements is recognized immediately, variable-length statements (e.g. phone numbers) are terminated after a while of inactivity. No terminating character is used! A correct command is confirmed with one long beep, an incorrect one is rejected by a sequence of short beeps.

The entry password for programming must be entered within 10 seconds after the incoming call is answered. It is set to 0000 from the factory.

## The most important commands

Entry into programming:

**#0000** After a while, the beep-beep starts to sound

To set the phone number for button 1:

**101 xxxxxx** and wait for confirmation with a longer beep. xxxxxx is the number that the intercom should dial.

To set the phone number for button 2:

**102 yyyyyy** and wait for confirmation

Access code for operating the relay from the outside (e.g. opening the lock from the outside)

**3211 xxxxxx** and wait for confirmation. Code xxxxxx activates relay 1, has 2 to 6 digits

**3221 yyyyyy** and wait for confirmation. The yyyyyy code switches relay 2, has 2 to 6 digits

Exit button (opening the lock from the inside)

**3\*11** pressing the EXIT button activates relay 1

**3\*21** pressing the EXIT button activates relay 2

Changing the password for entering programming mode

**44 abcd** The next time you enter programming, you will need to enter #abcd instead of #0000

Setting parameters to factory values (does not delete phone numbers, otherwise everything)

**8##**

Delete phone numbers  
**81**

Code for relay control over the phone (opening to visitors):

**351 AB** Entering ab during a call will switch relay 1. By default, the code is set to 55.

**352 cd** By entering cd during the call, relay 2 is activated. By default, the code is set to 66.

To exit programming mode:

**9** or by putting the receiver down

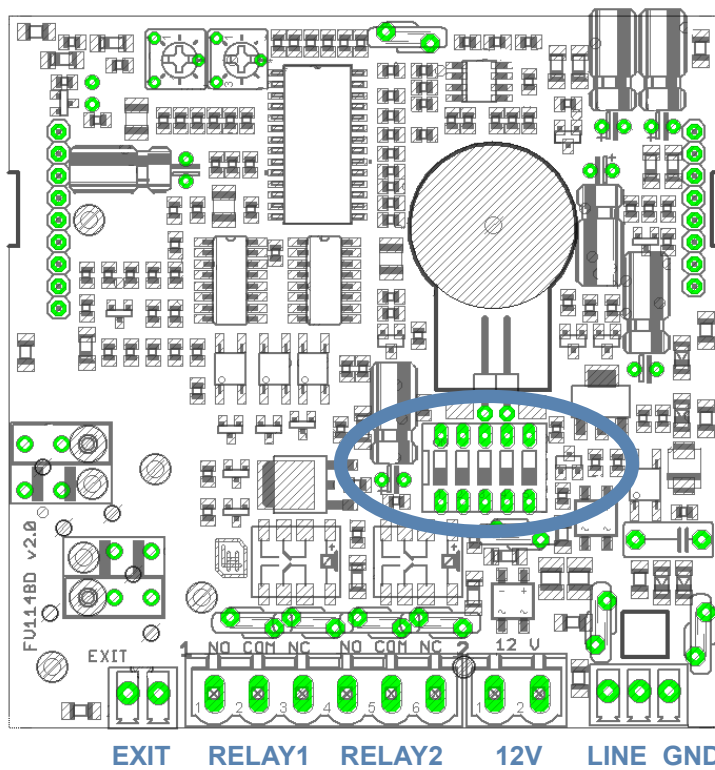
## Fores Vario 1148 Intercom Installation

To turn on the backlight for business cards:

DIP2 ON

Switching on the intercom's temperature maintenance (protection against condensation of water vapour when placed outside the building)

DIP5 ON



For relay, lighting and heating functions, it is necessary to connect an 11-24V/DC or 10-16V/AC power supply to the 12V terminals. The relay contacts can control a maximum of 48V/1A, **in no case must they be used to switch the voltage of the distribution network (230V AC)!**

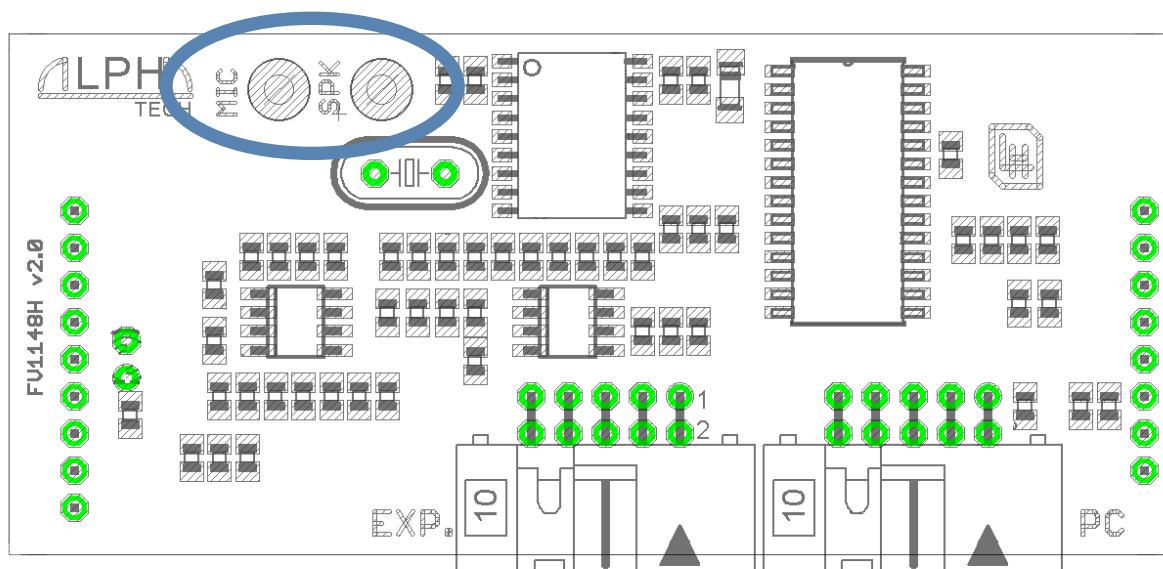
The LINE terminals are used to connect the telephone line, while the GND terminals are used to safely ground the device.

For details, see chapter 1.5 of the Brave intercom manual.

Only the switch button may be connected to the EXIT terminals, no electronic device.

## Adjust the volume

Adjusting the volume of the Fores intercoms is intuitive. Using potentiometers, you can set both the microphone sensitivity (MIC) and the volume of the built-in speaker (SPK). Here for the Fores Vario 1148 model.




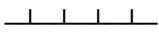
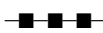

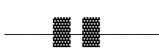


## Unsupported parameters

The Fores series intercoms retain the meaning of the parameters used to set up the Brave series intercoms. Due to the different design of the Fores intercoms and maintaining compatibility with the Brave series, the intercom ignores parameters 505, 507 to 509 and the parameters of group 7 – see Chap. 5 of the Brave intercom manual.

## Signaling overview

The Fores intercoms signal acoustically states that may occur during operation. To make it easier to recognize, they usually use one tone and a combination of different lengths as in Morse code.

Status	Signalling	Comment
Connecting to a line (Reset)	—■ ■ ■—	Morse "K"
Line pick-up type 1	—■ ■—	Morse "A"
Hang-up of the line type 1	—■ ■—	Morse "N"
Line pick-up type 2	—■ ■ ■—	Morse "U"
Hang-up of the line type 2	—■ ■ ■—	Morse "D"

Empty memory (not programmed number)		Morse "H"
Ticking into a call		Very short beeps
Notification of the approaching end of the call		Morse "S"
Entering programming mode		4 commas (Morse Ch)
Sound prompt in programming mode		Two modulated beeps
Command or parameter accepted		Very long comma
Command or Parameter Rejected		Morse "5"

The activity of the Fores intercom can be analyzed according to what it signals. This can be useful for troubleshooting installation issues or analyzing error conditions. The sound signaling can be influenced by the parameters 61, 62 and 63.

## Note

Except for the above, the Brave intercom manual can be used for more detailed command and installation information until the Fores manual is published.

## Web

<https://www.alphatech.cz>

<https://www.alphatech-cz.eu/>