



# Blue Gate A "BRAVE" 4G VoLTE



- 2G/4G GSM
- Reverse polarity
- Tax 12/16 kHz
- VoLTE - voice over LTE
- SMS/mail server - option
- USB 2.0 full speed interface for LTE modem
- FxS (analog phone or PBX CO line)

## Blue Gate A helps you reduce the cost of your calls from fixed to mobile phones ...

Blue Gate A Brave 4G you can reach all mobile offices and construction sites far from built up areas

By simulating the lines networks of your PBX our Gateway let you install your mobile offices very quickly

Programmable call barring table restricts undesired call independently of the PBX

The installation is very simple – plug and play – gateway is immediately operational.

Use Blue Gate A Brave 4G as LTE USB modem to connect one or more computers to the Internet network.

Take advantage of simultaneous voice and data connections in LTE network

With a POP email software (SMS mail – running under Outlook) you will be able to have more than a voice use, you will enhance it to a mobile office use. You will be able to send SMS like you send emails usually.

## Benefits

- Possibility of autonomous use or instead of a network line
- Possibility to connect gateway to analog PBX CO line
- LTE USB modem to connect one or more computers to the Internet network.
- Sending and receiving SMS\* fully compatible with your email software (option)
- 2G/4G EU-Band
- Programming by PC via USB port
- Tax pulses 12 or 16kHz for your billing
- Restriction of outgoing calls
- Compatibility with LCR systems
- Dynamic ECHO cancellation
- Sending CLIP to the PBX
- Reverse polarity
- 12V power supply
- Battery back up (option)

\* software option



## Models

### Voice/Data/ SMS\*

○ Blue Gate A Brave LTE – 1 GSM channel (1 SIM card)

\*With USB and SMS mail software (option)

## Specifications

### Blue Gate A Brave

Operating position: various

#### Operating conditions

Temperature: +5 °C ÷ +40 °C,

Humidity: 10÷80 % at 30 °C

#### Dimensions and weight

Metric (mm) 100x130x37

0,8 Kg

#### Part of power supply

##### Supply voltage

8-12V AC/DC

230 V (±10 %) (adapter)

#### Power input

Max. 20 VA

#### Protection

Fuse in adapter

## Accessories

### Options

○ USB interface + GGset (program for configuration via PC)

○ SMS Server Licence (on POP server)

○ Battery back up

## Specifications

### Analogue telephopne line

#### Telephone interface

2-wires

#### Telephone conector

RJ 11

#### Impedance

600 Ω ±20 %

#### Dial

Tone DTMF tt > 30 ms

#### Supply conduction

24 V

#### Current loop

max. 30 mA

#### Resistance of subscribers conduction

max. 500 Ω

#### Ringing

55 Vef / 50 Hz

#### Signalization

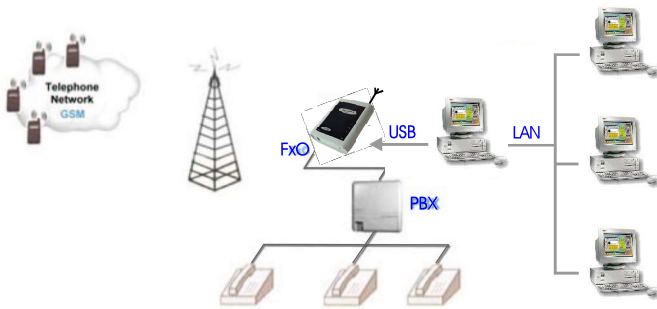
425 Hz ±20Hz

#### CLIP

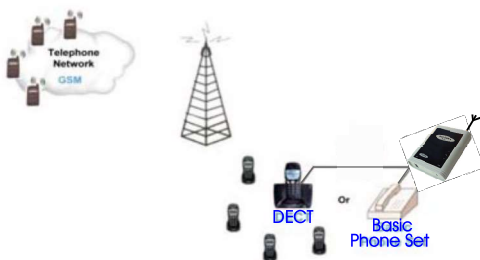
FSK Bell

## Connectivity Options

### PBX CO line use, Internet network use



### Standalone use with basic phone



### USB

USB 2.0 full speed interface  
USB Driver for Windows 10

### GSM

#### Mobile network

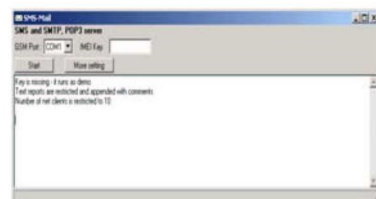
2/4G Band EU (B1, B3, B7, B8, B20, B28A)

LTE Voice over LTE

#### Provider

according SIM/USIM card (3V and 1.8 V)

### SMS Software



Distributed by: